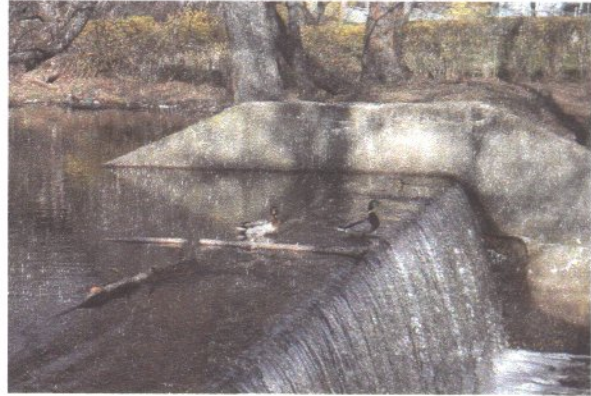


# LETS MAKE IT... **CRYSTAL CLEAR**

Issue #2  
September, 2003

George Decker – Chairman  
Kevin Carroll – Vice Chairman  
Alfred Lockwood – Asst. Treasurer/ Special Projects Chairman  
Lawrence DeMaio – Secretary/Water Chairman  
Neal Galletta – Asst. Secretary/ Sewer Chairman



**We at The Pompton Lakes M.U.A would like to present you with the second issue of our newsletter ... your direct liaison to the M.U.A and our current events.**

Bloomingtondale	\$2.66
Butler	\$2.76
<b>Pompton Lakes M.U.A</b>	<b>\$1.50</b>
Ringwood	\$4.75
Wanaque	\$2.35
West Milford	\$5.55

*Courtesy of Bloomingtondale Water and Sewer*

**Just the Facts...**The two charts displayed show that Pompton Lakes M.U.A. offers exceptional rates for both water and sewer in comparison with surrounding towns.

We not only have a commitment to distributing the best quality water to our customers, we also acknowledge the importance of maintaining reasonable water and sewer rates.

MUNICIPALITY	WATER	SEWER	TOTAL
Bloomingtondale	\$86.54	\$185.74	\$272.82
Butler (in town)	\$91.08	\$92.34	\$183.42
(out of town)	\$91.08	\$174.24	\$265.32
<b>Pompton Lakes M.U.A</b>	<b>\$32.50</b>	<b>\$112.50</b>	<b>\$145.00</b>
Ringwood	\$90.25	\$300.00	\$390.25
Wanaque WBSA	\$60.09	\$200.00	\$260.09
West Milford	\$105.45	\$195.00	\$300.45

*Courtesy of Bloomingtondale Water and Sewer*

## **Construction and Connection News...**

Summit Falls, a 156-unit complex, came on line in August of 2001. The developer installed a water booster station to provide adequate pressure and supply due to the high elevation. This station is maintained by the complex. The sewer system is gravity fed into the Authority's mains on Hamburg Turnpike.

The Highlands, a 160-unit complex located off of Cannonball Road, is in the process of connecting to the Authorities' system. Currently, 70% of the complex is online. Due to property elevation, the developer installed a pumping station to maintain proper flow to the Authorities sewer mains located on Cannonball Road. The complex will maintain this pumping station.

The Authority worked closely with the developers to ensure that the water and sewer demands of these complexes were met. The Authority also required that certain inspections be completed and that state water and sewer regulations were met before the advancement and completion of these projects.

In an effort to avoid ongoing problems with old lines, we have installed new sewer mains and manhole assemblies on Walnut Street, Dupont Place, and a section of Poplar Street in advance of the Borough's resurfacing of these streets.

### **Neighborhood Notices...**

- To prevent damage of water shutoffs and sewer cleanouts located under sidewalks and driveways, it is necessary to contact the Authority before excavating.
- If your water meter is located in an unheated area, we recommend you protect it during winter months by installing heat tape and/or insulation.
- The M.U.A will be conducting our Fall Hydrant Flushing Program beginning October 14, 2003 and ending October 29, 2003 between the hours of midnight and 6am.
- The M.U.A is prepared in case of emergencies such as, power loss or flooding. The well houses and sewage pumping stations are equipped with emergency generators.

### **Did you know?**

- 1) Almost 80% of the earth's surface is covered with water.
- 2) 97% of the water on earth is salt water.
- 3) 2% of the water on earth is glacier ice.
- 4) Less than 1% of all water on earth is fresh water.

If you have any questions concerning your drinking water or any suggestions for this newsletter please contact John F. Wegele, Kathy Shortway, or Andrea Giallorenzo at the Pompton Lakes M.U.A. office, # 973.839.3044. Office hours are Monday through Friday, 8:00 am – 5:00 pm. Also, visit our website at [www.plbmua.org](http://www.plbmua.org).

### **Why does my water sometimes have sand in it?**

Routine cleaning of pipes that carry drinking water can stir up material that has settled to the bottom of the pipes. This can give your water a temporary sandy appearance. The wells in Pompton Lakes have specially designed screens (like window screens) to hold back the sand. It's possible for small quantities of sand to pass through a well screen.

The best way to solve this problem is to flush your home pipes by running water for a while through your largest faucet, probably the bathtub. Saving this water for other uses is a good conservation measure.

Adopted from *Plain Talk About Drinking Water*. By Dr. James M. Symons



Pompton Lakes Borough  
Municipal Utilities Authority  
2000 Lincoln Avenue  
Pompton Lakes, NJ 07442

**Third Class  
Postage  
Permit  
#89**

***Resident of Pompton Lakes  
Pompton Lakes, NJ 07442***